



WEST  
AUSTRALIAN  
BRIDGE  
CLUB

# TRUMPS PLUS

AUGUST 2008 VOLUME 2 - 08

9284 4144  
7 ODERN CRES.  
SWANBOURNE

## ♥ Expert Bridge Play



TIM SERES

RON KLINGER



And PETER SMITH

## FOUNDATION DAY CONGRESS ♣



P. 4-5

## ♠ Gardening Swanbourne Style



## Inside Trumps Plus ♦

	Page
Editorial	2
President's Letter	3
Club Congress	4
Beyond the Basics—Peter Smith	6
Declarer Play—Tim Seres	8
Experience Teams Bridge	10
Ron Klinger's Column	11
Vale Diana Chase	12
Gardening Notes	13
Competition Winners	14
Members Pages—Club notes	16
From The Archives	20
Solutions	22
Diary Dates	23

# EDITORIAL

We publish this issue of *Trumps Plus* with very mixed feelings. We have been delighted with the enthusiastic response to our first issue in May and the willingness of so many to contribute. However, we have been greatly saddened by the sudden and untimely passing of our co-editor, Diana Chase. Diana was a highly respected, long standing member and club player. Later in this issue, her long time friend, bridge and business partner, Valerie Krantz, pays a moving tribute to Diana.

There are several new developments in this issue. In order to highlight the history of the club, we have introduced an 'Archives Page' with articles and photos from the past. If any members have any memorabilia or stories on our long history that they would like to share, please feel free to contribute. Similarly, any contributions to the Member's Old and New pages are very welcome.

We are also delighted that Ron Klinger, one of Australia's best known bridge teachers and one of the world's most prolific bridge authors, has agreed to contribute to *Trumps Plus*.

One of Ron's lesser known books is co-authored with Andrew Kambites, "How Good is Your Bridge Hand?". *Trumps Plus* will feature, from time to time, excerpts from this excellent book on hand evaluation. The first of these appears in this issue.

If you are keen learn more from Ron, try visiting [www.ronklingerbridge.com](http://www.ronklingerbridge.com).

Our new club continues to grow both in membership and in bridge day attendances, with increasing numbers of visitors coming to play bridge. The workload of your committee and many other unofficial helpers has increased substantially. In particular, I would the mention the great work done by Tom Wheatley in bar management and Mike George in planning and creating the native garden around our new building.

The club AGM will be held in early October. The committee would like to hear from members who may be able to offer their time and expertise in different ways, so that the club administration remains strong.

**John Rigg**

Editor: John Rigg



Assistant Editor: Val Krantz



Computer Layout and printing:

Lynne Errington Sheenagh Young



Are you a keen photographer or do you just take the odd social snap? *Trumps Plus* is keen to get any pictures of club events, your travels, or photos from the club's past. Email them to the club or pass them along to any of the editorial staff.

EMAIL

[bridge@wabridgeclub.com.au](mailto:bridge@wabridgeclub.com.au)

ADDRESS

7 ODERN CRESCENT  
SWANDBOURNE

PHONE

9284 4144



# P R E S I D E N T ' S

## Dear fellow bridge players

This is my final letter to you as your President. Our Constitution, quite sensibly, has a three year limit in a continuous role. We all know what happens to politicians who stay too long. The new building is proving a great success and we are delighted with the support our many sessions are achieving. Just as well we looked ahead 20 years for playing space though. It seems we may get there a lot earlier than we'd anticipated.

Our club is in good financial shape. The annual audit underway at the moment will tell us how good and all will be revealed at the AGM on Tuesday, October 7<sup>th</sup>. This is the most important meeting in our calendar so please come if you're able.

A number of new initiatives have been proposed and discussed by the Management Committee:

- ❖ The Tournament Committee has suggested purchasing 'Bridgemate', the electronic scoring system for 56 tables, at a cost of \$18000-\$ 20000. We're also considering electric wiring, computer and TV screens.
- ❖ The Department of Racing, Gaming and Liquor Licensing keep losing our application for a license. We hope they find it soon. Meanwhile Tom Wheatley, our efficient Bar Manager, has approval to buy a small freezer for ice storage.
- ❖ Prue Sheldrick is considering many ideas for improving pantry storage, which is under pressure because between us all we eat a lot of biscuits and drink lots of cups of tea and coffee.
- ❖ Next week the Conference Room will have a new boardroom table and two new display cabinets for club trophies. The cost of a locked library cupboard was rejected as too high for the moment. Don't forget though that we have a growing collection of bridge books that you can borrow. Check our website for what's available and Sheenagh can organise a loan.
- ❖ On an unpleasant note our external walls have been defaced again with graffiti. Please report any such vandalism to a committee member.

So thank you for your support over the last three years. Jan and I are off to spend two months with our grandchildren in England and Spain. Happy bridging and I'll see you at the AGM.

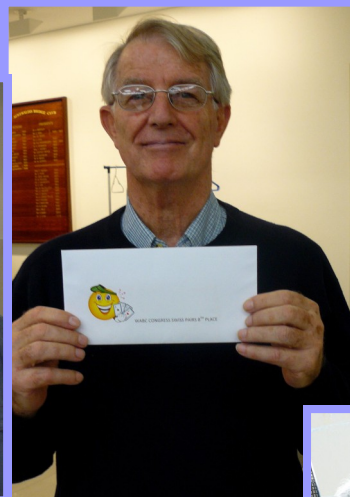
**Des Cain.**

# FOUNDATION DAY

Our first Foundation Day Congress in the new clubhouse was an enormous success. There were record numbers for every event and it all ran like clockwork, thanks to the superb work of the convenor, Helen Kemp, Directors, Bill Kemp and Harold McKnight as well as Office Manager, Sheenagh Young who was there all weekend keeping everything and everyone in order.

Special thanks go to the other helpers, Glen Basham, Breffni Baker and Rosemary Rear and a very big thank you to Jill Mowson and all the members who provided our usual stunning afternoon tea on the Friday.

Congratulations to all the winners.



# CONGRESS WINNERS

## FRIDAY PAIRS

### NORTH SOUTH

- 1<sup>st</sup> Helga Seefeld & Anne Hesford
- 2<sup>nd</sup> Austin Gillanders & Hazel Elliott
- 3<sup>rd</sup> Claudine & David Charters

### EAST WEST

- Betty Watson & Laura Raiter
- Helen Hellsten & Tony Lusk
- Wilhelmina Piller & Marie Sheridan

## SATURDAY PAIRS

- 1<sup>st</sup> Egmont Melton & John Beddow
- 2<sup>nd</sup> Ranjit Gauba & Richard Fox
- 3<sup>rd</sup> Margarita Hughes & Jonathan Free

## PRESIDENT'S PAIRS

### NORTH SOUTH

- 1<sup>st</sup> Bobbie Mitchell & June Simpson
- 2<sup>nd</sup> Diana Chase & Jean Williams

### EAST WEST

- Val Fleay & Margaret King
- Jill Mowson & Beatrice  
McCarthy

## TEAMS

- 1<sup>st</sup> John Beyfus, Brian and Carol Fensome, Wilhemina Piller
- 2<sup>nd</sup> David Schokman, Tony Menezes, Cynthia Belonogoff and David Matthews
- 3<sup>rd</sup> John Nicholas, John Kemp, Nigel Dutton and Marie-France Merven

## SWISS PAIRS

- 1<sup>st</sup> Marie-France Merven and Nigel Dutton
- 2<sup>nd</sup> Judy Crooke and Anne Apthorp
- 3<sup>rd</sup> Patricia McNamara and Jan Blight



# BEYOND THE BASICS

With Peter Smith

## CONSIDERATIONS WHEN OPENING

As the opener, when considering opening with a suit bid it's essential to consider not just your opening bid but also your rebid. You'll inevitably need to make a rebid if your partner responds in a new suit, which of course is forcing. Take the following two hands as opener:

Hand 1	Hand 2
♠ A 6	♠ 7 6
♥ A K 4 3	♥ A K 4 3
♦ 5 4	♦ 5 4
♣ A J 9 5 4	♣ A J 9 5 4

You would start with a 1♣ opening in each case and over a 1♦ response would plan on a 1♥ rebid. But what if partner responded 1♠? On Hand 1 you could rebid 2♥ but on Hand 2 you couldn't. Why? Because 2♥ is a reverse and for that you need 16+ points. So on Hand 2 you would need to rebid 2♣, to show long clubs and a minimum i.e. less than 16 points.

I hope the above example helps clear up some confusion that exists about the reverse, which is defined as follows:

*A reverse is a rebid of two of a new suit that is higher ranking than the bidder's first suit.*

A further test about whether you are reversing or not is this:

*If partner wishes to give preference back to the first suit it would have to be at the 3 level.*

This is why rebidding 1♥ over a 1♦ response is not a reverse: it's a rebid at the one level only (not the two level) and responder can always go back to the first suit at the two level i.e. is not forced to the three level. But after a 1♠ response a 2♥ rebid meets the criteria for a reverse.

A reverse shows 5-4 shape in the suits bid and since it shows extra strength (16+ points) it is FORCING.

What about these three sequences?

1.		2.		3.	
Opener	Responder	Opener	Responder	Opener	Responder
1♦	1♠	1♦	1♠	1♦	1♠
2♥		2♣		2♣	

The opener has reversed in the first sequence (and therefore needs 16+ points and 5-4 shape). The second sequence promises no extra points, but still suggests 5-4 shape. Sequence 3 has nothing to do with reversing – opener is just supporting responder's suit. A reverse is a rebid of a NEW suit – one previously unbid by the partnership.

Knowing about the reverse has many implications when considering both your opening bid and your rebid. Try the following quizzes.

### QUIZ

You deal each of the following hands. What would you open? Consider your rebid over the various possible responses – especially the most difficult ones!

♠A 6 5 4  
♥A 8  
♦K J  
♣J 9 8 4 3

♠A 8  
♥A 6 5 4  
♦J 9 8 4 3  
♣K J

♠6  
♥K Q 8 3  
♦A Q 7 5  
♣J 9 5 4

♠6  
♥K Q 8  
♦A Q 7 5  
♣J 9 5 4 3

1) \_\_\_\_\_

2) \_\_\_\_\_

3) \_\_\_\_\_

4) \_\_\_\_\_

♠4  
♥A Q 9 7 4  
♦K J 9 8 6 5  
♣J

5) \_\_\_\_\_

♠Q 4  
♥A 7 4 2  
♦A Q 7 6  
♣K J 6

6) \_\_\_\_\_

♠8 7  
♥J 9 7 6 2  
♦A Q 8  
♣K Q 5

7) \_\_\_\_\_

♠A J  
♥Q 8 6  
♦A Q  
♣9 7 6 5 3 2

8) \_\_\_\_\_

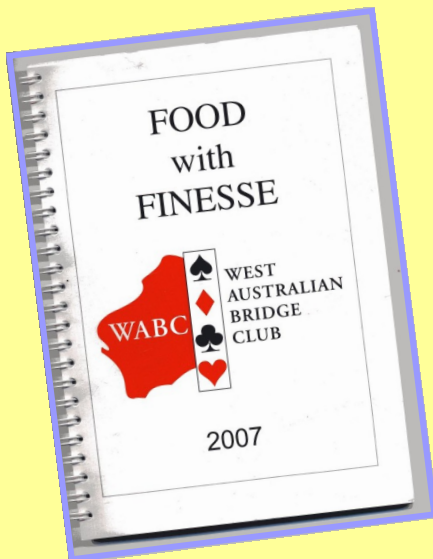
SOLUTIONS TO THE QUIZ ON PAGE 24

## Duty partners

If you can help, put your name on the list on the board at the club  
OR give your name to the following organisers:

**Wednesday evenings:** We need a volunteer to organise the roster  
Can you help?

**Saturday Afternoon:** Contact Bernie West : 9388-3290



### LOOKING FOR A GOOD DINNER?

You can't go past the ideas in

### *Food With Finesse*

our fundraising cookbook which costs a mere \$15.

Try Sitty's Meat Loaf (p. 28)

Fish Stew (p.33) or

Luscious Baked Lamb and Vegetables (p. 30).

Or what about a special dessert:

- Date Chocolate Torte, ( p. 78)
- Queen Mary's Tart (p.59)

**Delicious!!**

There are lots of tried and tested recipes.

CONTENTS	
PRE - EMPTS (Dips and Nibbles).....	1
CLUBS (Soups).....	8
HEART STARTERS (Entrées).....	13
ACES (Mains).....	18
PASTA PLAYS (Pasta).....	36
VEGETABLE COUNT (Vegies).....	40
SLAM SALADS (Salads).....	45
DIAMONDS (Desserts).....	52
CUE RAISES (Cakes & Biscuits).....	63
SQUEEZE PLAY (Jams, Pickles & Sauces).....	81
OVERTRICKS (Chocolates & Goodies).....	85
INDEX.....	89

# UNUSUAL LINES OF PLAY

Would you have done the same?

## PLAY BRIDGE WITH TIM SERES

Tim Seres who died in Sydney last year is widely regarded by bridge experts, nationally and internationally as the greatest card player, ever in competitive contract and rubber bridge in Australia. In 1995 Michael Courtney a top contemporary player who played with and against Tim for many years, published a book of the above title on some of Tim's greatest and most instructive defensive and declarer plays. The style of the book is quite entertaining and *Trumps Plus* is pleased to have permission to reproduce some of these plays and Michael's analysis. Members may purchase the book through either Jill or Michael.

Here is a hand which illustrates Tim Seres' declarer play very well. Would you have made the contract?

---

		♠97543		
		♥K1073		
		♦85		
		♣73		
		N		
	W		E	
		S		
		♠2		
		♥AQJ82		
		♦10743		
		♣AKQ		

---

	Contract: 4♥		Lead: ♥4	
	West	North	East	South
	Flint	Cummings	Reese	Seres
				1♥
	Pass	2♥	Pass	4♥

---

Four Hearts looked a certainty until West produced a trump lead. Now the problem is that declarer may no longer have time to ruff two diamonds in dummy.

How do you play the hand?

The deal is from the 1964 Olympiad in New York. This hand appears in Dick Cummings' book on *Australia the 1964 Bridge Olympiad* and, as given, in the *Daily Bulletins* edited by R L Frey and A Dormer. Also A Truscott, *New York Times* May 22nd 1964.

The full deal and Seres' play are given on page 24





*If you have any hands which are unusual and might be of interest to club members, please feel free to contribute a short or long article.*

## Nominate for the committee today!

NOTICE IS HEREBY GIVEN OF THE ANNUAL GENERAL MEETING OF  
THE WEST AUSTRALIAN BRIDGE CLUB TO BE HELD AT THE WABC CLUBROOMS  
ON TUESDAY 7<sup>th</sup> OCTOBER COMMENCING AT 5.00pm.

### AGENDA

PRESENT:

APOLOGIES:

CONFIRMATION OF MINUTES OF AGM 25<sup>TH</sup> SEPTEMBER 2007:

PRESIDENT'S REPORT:

TREASURER'S REPORT:

AUDITOR'S REPORT:

ELECTION OF OFFICE BEARERS:

ELECTION OF HONORARY AUDITOR:

PRESENTATION OF PATRON'S CUP: THE MABS McCULLOCH TROPHY

OTHER BUSINESS: AMENDMENT OF CLUB CONSTITUTION IN ACCORDANCE WITH LIQUOR LICENSING LAWS

CLOSE OF MEETING:

### WABC MANAGEMENT COMMITTEE – NOMINATION FORM

To be completed and placed in Ballot Box

To the Hon Secretary  
West Australian Bridge Club Inc

I hereby nominate.....for the Office of .....

Proposer.....Seconder.....

Signature of Nominee.....Dated.....

# EXPERIENCE TEAMS BRIDGE

## BAWA – Teams of Four (Restricted) Competition

Each year BAWA sponsors a Metropolitan Inter Club Teams of Four competition to introduce less experienced players to the game of “Teams” bridge. To be eligible for this competition players are to have a rank of State Master (one star) or below. Generally players in this restricted category will have not yet earned 150 master points. All players in this competition however have a passion for the game and wish to improve their overall game through competition, pitting their skill against other players at a similar level of achievement.

Teams Bridge is regarded by many as being a fairer and more enjoyable form of bridge (as compared with match point duplicate and rubber bridge). At Matchpoint duplicate luck plays a greater part in the overall result. At teams the vagaries of luck are reduced and technical skill (in both the bidding and play) is rewarded. In teams you encounter fewer ‘wild bids’ gambled to outsmart the field. The general approach is more disciplined. Players strive to reach the right contract as declarer. And in play aim to make the contracted bid. As a defender your principal objective is to defeat the contract. Wild bids or erratic play tend to compromise the effort of the team. Peter Smith, a bridge grand master who conducts classes at WABC, has produced an excellent one page summary of the general approach and tactics used at teams bridge.

Clubs are able to nominate more than one team and matches are arranged to take place over the course of a year. In 2008 10 teams were entered in the competition with WABC nominating two teams. The WABC (A) team is allocated to the Southern metropolitan division and the WABC (B) team played other clubs in the Northern metropolitan division.

The top two teams in each division qualify for the finals play off in November.

The club hosting the match puts on a light supper for the visiting team and supplies hand

records of the boards played. The post match discussion over supper gives players an opportunity to socialise and post mortem the match played with their guests and team members.

As at the date of writing both WABC teams have had outstanding results in their respective divisions. Both the A and B teams are at the top of their respective groups. The A team, coordinated by Jean Field has played and won all matches played. The B team coordinated by John Aquino has played five matches and won four and drawn one.

A number of club members have participated in each of the teams and contributed to the successes achieved. They have included:

Clive and Inga Hunt, Richard Fox, Ian Clark, Rob Stick, John Aquino, David Collis, Steve Pynt, Loretta Hughes, Marcey Spilsbury, Alison Brogan, Bernard West, Margaret Martin, Breffni Baker, Melanie Sheffield and Peta Fuhrmann..

BAWA annually conducts another event designed to introduce players to playing as part of a team. In this red point event any three players of any standard below State Master may form a team, and will be allocated a Master who will play with each team member in turn. The object is to encourage new players to enter a team event and to give them some confidence and experience. BAWA encourages players to take the plunge assuring them that they will not regret the experience. It is great fun for all and there is no pressure. The tournament in 2008 is run on Sunday 17 August at the WABC clubhouse and entries can be made on the BAWA bridge site.

This article is written with the aim of encouraging club members who have not played teams bridge, to open the door to this experience. Please speak to Jean Field or John Aquino if you would like enquire as to how you may participate in future Club sponsored teams events.

**John Aquino**



# Ron Klinger Answers Your Bridge Queries

[courtesy of [www.ronklingerbridge.com](http://www.ronklingerbridge.com)]

Hi Ron

Our 2D is multi; weak 2 in either major, 21-22 balanced or 8 playing tricks in any suit.

**Partner has:**

AK  
5  
8632  
AKQ1084  
and opens 2♦.

**I have:**

Q73  
QT962  
AKQ5  
7

and reply 2NT (strong inquiry). Partner bids 4♣ (3♣ would have shown weak 2♥). I bid 4♥, which partner takes as a cue-bid. LHO doubles with hearts, partner bids 4♠ and I bale out at 5♣. Since the ♣J came down, we made six. How should the bidding go?

*(a) So what was 4H? An attempt to play in your 5-card suit, queen-high?*

*(b) Slam is not so marvellous, since you need to lose no club trick (a tick above 50%) if a heart is led, as it will be.*

*(c) Nevertheless you did not know that in the bidding and partner's clubs could have been AKQJxxx with 6♣ a super spot. The problem is that you had such great diamond cards and naturally partner was worried about two diamond losers. You 'cue-bid' hearts, partner cue-bids spades and you sign off? The obvious message appears to be that you lack diamond control.*

*(d) You need to resolve whether 4♥ by you is a cue-bid or not. Next, what did partner's 4♠ cue-bid over the double indicate? What would a pass of 4♥ have meant (assuming that 4♥ is a cue-bid for clubs)? A sensible agreement when a cue-bid or asking bid or similar is doubled is to play that pass denies 1st and 2nd round control (and is not an offer to play in 4♥ doubled!), redouble shows first-round control and bids have their normal meaning and promise 2nd round control in the doubled suit. Thus, the 4♠ cue-bid over 4♥ doubled would promise 2nd round heart control as well as spade control and you could jump to 6♣, if that is your wish, or cue-bid 5♦, since it may be sensible to play in 6NT on another occasion.*

## WANT TO IMPROVE YOUR BRIDGE?

See [www.ronklingerbridge.com](http://www.ronklingerbridge.com)  
for new material each day.

## Bridge Holidays with Ron and Suzie Klinger

**in 2008**

**Salamander Shores**

**November 2-7**

**Norfolk Island**

**November 16-23**

**For 2009**

**Lord Howe Island**  
**June 20-27**

**Kangaroo Island**  
**August 2-9**

**Murray River Cruise**

**August 9-14**

**Details for any of the above from:**

**Holiday Bridge**  
**P.O. Box 140**  
**Northbridge NSW 1560**  
Tel: (02) 9958-5589

# *Hans G Rosendorff Memorial Congress Women's Teams*



**2008 National Women's Teams Event on  
Sat 27<sup>th</sup> September - Mon 29<sup>th</sup> September  
At Nedlands Bridge Club  
14 Melvista Avenue Nedlands, WA  
**Gold Points** and PQPs**

Play commences promptly at 9.30am and finishes 6.00pm (approx.)

**There is no play Friday evening 26<sup>th</sup> September**

**Entry Fee: \$420 per team  
collected at tables or payable online-  
see details on the BAWA website**

**Entries: [www.bawa.asn.au](http://www.bawa.asn.au) or  
Sheenagh Young 0409381439**

**Cocktail Party and  
presentations after play on  
Monday**

**Charge for Guests \$10.  
Number of guests must be ad-  
vised by Sunday**

**Tournament Director: Bill Kemp**

**Convenor: Sheenagh Young [hgrWT@abf.com.au](mailto:hgrWT@abf.com.au)**

# **Hang G Rosendorff Memorial Congress Men's Swiss Pairs**



**2008 National Men's Swiss Pairs Event on  
Sunday 28<sup>th</sup> Sept. - Monday 29<sup>th</sup> Sept.**

**Gold Points**

**9.30am Start - 6.00pm finish**

**Sunday and Monday at  
Nedlands Bridge Club**

**14 Melvista Ave Nedlands, WA**

**Entry Fee: \$70 per person  
collected at the tables or payable  
online - see details on the BAWA  
web site**

**Entries: [www.bawa.asn.au](http://www.bawa.asn.au)  
Or  
Nigel Dutton 0419 043 926**

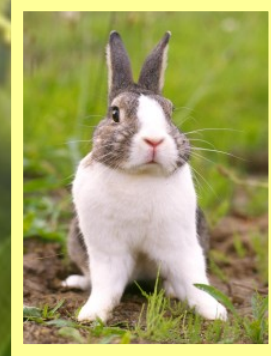
**Cocktail Party and Presentations  
after play on Monday**

**Charge for Guests \$10. Number of  
guests MUST be advised by Sunday**

**Tournament Director: Peter Holloway  
Convenor: Nigel Dutton [hgrMSP@abf.com.au](mailto:hgrMSP@abf.com.au)**

# GARDENING SWANBOURNE STYLE

The gardens surrounding the clubrooms will over the next twelve months start to show the carefully selected colours and flowers of our native bushes and trees thanks to the efforts of our resident garden gnome, Mike George and his very diligent helpers.



## Gardening Notes

The local Friends of Allen Park and the Car-ramar Coastal Nursery at Secret Harbour consulted with us about the first stage in the garden development of the new clubrooms. They emphasised the need for hardy native plants that can withstand severe winds and salt-laden air, as well as being 'waterwise' and low maintenance.

We selected golden hibbertia and peppermints from the deep south coast, tea tree and local pine' from Rottnest Island and the Illyarie eucalyptus with its red caps and deep yellow blossom from northern coastlines at Dongara.

A range of bird-attracting grevilleas and hakeas, assorted yellow and golden banksias, blue dianella and native bluebells and several native fuchsias in red, pink and white fitted the bill too. And scattered throughout are native rosemary, templetonia, coastal wattle, yellow conostylis and the mauve Yanchep bell.

We chose small to medium shrubs, assorted ground covers and numerous trees, four of the largest kindly donated by Club members. In the years ahead we will all enjoy their welcome shade and our native garden will provide attractive surrounds to a great building.

Mike George





# VALE DIANA CHASE

## **'When in doubt.....do!'**

'When in doubt, do!' Diana's philosophy at the bridge table was true of her approach to life. Live every day, every minute to the full. And she did.

Diana (with an 'a') was born Diana Dunbar in Guildford on All Saints' Day 1935. Her parents separated when she was a toddler and from Kindergarten through to Leaving, she boarded at Perth College where her mother taught. Holidays on family dairy farms in the South West gave her a love of country life, of animals, of riding, of playing games and sports of all kinds - and a lifelong aversion to milk. She loved PC. The nuns and teachers helped her develop amongst a myriad of things, her passion for writing, reading, history, poetry, hockey, swimming and tennis. Many close friendships too dated from those days.

Teachers' College followed her school years. Diana's first appointment was to a class of 60 infants in the migrant area of Medina. She survived because she could always get into a child's mind and had a great sense of humour. A few years later, in January 1958, Diana married newly-graduated engineer Chris Chase. They sailed immediately for Canada, both taking up jobs in Toronto. In 1959 their daughter Belinda was born - and they discovered a new bridge system, Standard American. A year teaching in a secondary modern in Britain followed, with quick trips to the Continent, Belinda, in tow. Six years later they arrived back home.

Teaching, the birth of sons, Stephen and Ben, beginning a Creative Writing degree at WAIT (Curtin University) and the move into an old cottage in Congdon Street, Swanbourne kept Diana busy. She found time for tennis, bridge, Rottneest, camping, expanding friendships and adding the first of many dogs named Jessie or Dusty to the family. The children grew up, established careers, moved out of home. Later came the blessing of grandchildren.

Over all these years Diana was drawn more and more to writing. She edited *Historicus*, a his-

tory journal for teachers, before leaving the profession to work with me in a business, *Research and Write*. We were commissioned to write all kinds of material, from the story of the two great wars through cartoons, to a history of the Shire of Capel. They were productive years. Diana's energy, tenacity and sense of fun enlivening our work and our friendship.

After Chris died suddenly in 1999, Diana struggled to regain her joie de vivre. Slowly she began a new life, opening her house to overseas students, traveling, and writing more children's fiction. Writing became an addiction: no day was complete without some time spent at her computer, dogs at her feet, pouring out her endless ideas in stories. She believed in the old values, honesty, integrity, compassion, courage, and without preaching, her books carried these messages. Her writing grew more sure, more recognised for its quality and professionalism. Avid readers wrote to her and she answered every letter. She also spoke during Book Week to children at schools and libraries, often wearing a hat with a rakish feather or bunch of fruit to get things going. The dress-up box at Congdon Street was a treasure trove.

Over the last year she began to play more bridge. She had a fine card sense, using it and her keen mind to play an aggressive and successful game. Her bridge partners expanded and she went to congresses in WA, the Gold Coast and in June this year to Vietnam. She died there suddenly on 4<sup>th</sup> July. Her family and friends mourn the loss of a generous and loving friend. When I come to making decisions though, Diana will still be with me, in daily life as at the bridge table advising "Val - when in doubt, do!"

**Valerie Krantz**

# COMPETITION WINNERS

## CONGRATULATIONS

### INDIVIDUAL CHAMPION

Sheenagh Young

### WOMEN'S PAIRS CHAMPIONS

Maura Rhodes and Anne Youngs

### HANDICAP PAIRS CHAMPIONS

Rosemary Enright & Rosemary Rear

### CHARLES PEARCE CUP CHAMPIONS

Jenny Liggins & Eileen Reilly (Above Regional)

Simone Pettorino & Julia Lawson (Below Regional)

## The Charles Pearce Cup



The Charles Pearce Cup commemorates long serving and popular member Charlie Pearce, who died, in his tenth decade of life, about 10 years ago.

Charlie was born in Kent, England and migrated to WA after the second world war. He was a very good player who represented WA several times in interstate competition. Regular partners at WABC included Rudy Woss, Rudy Wise, Brian O'Hara, Malcolm Smith and Ushi Houston. Incidentally members may have noticed an article about Rudy Woss in a recent community newspaper, 98 years young and still a regular and formidable player at West Coast bridge club.

Charlie is remembered as someone who loved to take his friends to "Rotto" for the weekend on his boat and as a tireless, dedicated and cheerful worker for the club and a great organiser. At the Dalkeith club, he was responsible for organising the ceiling and the air-conditioning.

In the current era, *The Charles Pearce Cup* is restricted to pairs who are WABC members. It is awarded to the pair with the highest total of the 3 best pairs score on the regular Wednesday evening games in July.

This year there were 5 nights from July 2 to July 30.

Congratulations to the 2008 winners Eileen Reilly and Jenny Liggins with an excellent score of 185.8 (nearly an average of 62%).

The top six pairs were:

J Liggins	E Reilly	185.8
T Brand	R Fox	174.7
C Bagley	L Milne	174.2
P Hicks	P Schwegler	172.6
A Rigg	J Rigg	171.7
L Ferreira	L Hughes	169.3

The best pair below regional master ranking were Julia Lawson and Simone Pettorino with 166.7 points



# COMPETITION WINNERS

**WABC CONGRATULATES THE FOLLOWING MEMBERS ON QUALIFYING FOR THE GNRP REGIONAL FINAL TO BE HELD AT WABC ON SUNDAY 16<sup>TH</sup> NOVEMBER**

Ian Clark & Bob Stick  
Oliver Mailes & Sussan Wilkinson  
Claudine & David Charters  
Val Fleay & Margaret King  
Clive & Inga Hunt  
Chris Bagley & Lynne Errington  
Jenny Davy & Jill Mowson  
Pat King & Ann Youngs  
Jean Field & Shelley Allen  
Mal Clark & Bernard West  
Helen Kemp & Krystyna Hassall  
Rica King & Prue Sheldrick  
Neville Stafford & Jan Berg  
Peter Hicks & Pepe Schwegler

**WABC CONGRATULATES THE FOLLOWING MEMBERS ON QUALIFYING FOR THE GNOT FINAL TO BE HELD AT WABC ON 13<sup>TH</sup> & 14<sup>TH</sup> SEPTEMBER**

OLIVER MAILES, SUZ WILKINSON, JOSH WILKINSON, JANE REYNOLDS

**\*\*\*IF YOU ARE UNABLE TO PLAY PLEASE INFORM SHEENAGH ASAP AS YOUR PLACE WILL NEED TO BE ALLOCATED TO ANOTHER PAIR or TEAM**



## WABC EVENING PAIRS CHAMPIONSHIP

**CLUB  
MEMBERS  
ONLY**

**Wednesday Evenings 13th and 20th August Time: 7.30 P{M**

**Entry Fee \$5 plus table money**

**Entries in Tournament book or via WABC website.  
[www.wabridgeclub.com.au](http://www.wabridgeclub.com.au)**

## MEMBERS NEW AND OLD BRIDGE IN OTHER PLACES

### MEDITERRANEAN BRIDGE AKA *BELLOTTE*



In search of the meaning of Life, the editor and the vice president arrived at the port of Bastia in north Corsica, in May, 2008. After a stroll around this picturesque town they stopped, as one does, for coffee. Naturally they were intrigued by 4 gentlemen enjoying a game of Belotte or “French Bridge”.

Characteristics of the game included no bidding or bidding sheets; after “declarer” had won a hand, the lead to the next board was by either

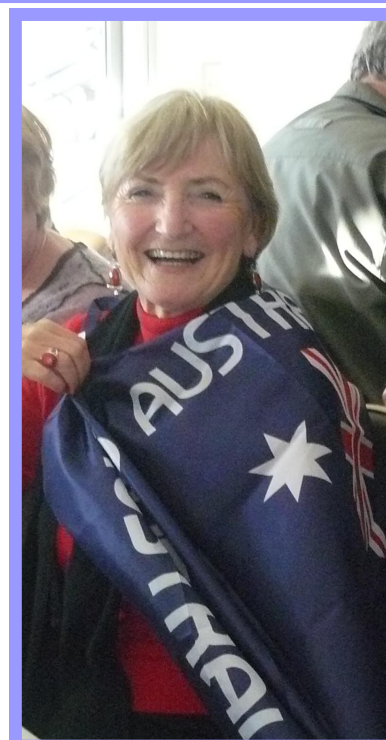
declarer or his partner. Play was very quick, declarer inevitably claimed after 8 or 9 tricks. Invariably, an animated post mortem and discussion and laughter followed every hand, of course, in very rapid “Corsican French”.

Time constraints and language difficulty prevented a detailed understanding of the game. Clearly, these folk were having fun.

**John Rigg**

### AUSSIE, AUSSIE, AUSSIE!

**Barbara Hughes was presented with the flag of her new country during a Friday session. Obviously an incentive to cheer loudly for our Olympic team, according to President Des Cain.**



## MEMBERS NEW AND OLD WHO'S WHO AT WABC



The latest celebration in the social area - Robin Paterson's birthday.

### NEW & REJOINING CLUB MEMBERS MAY - JULY

WE WARMLY WELCOME THE FOLLOWING PLAYERS TO THE MEMBERSHIP OF OUR CLUB

Susan Falkiner  
Sussan Wilkinson  
Margaret Frayne  
Charlotte Keay  
Merriel Perrin  
Evelyn Petters  
Lynne Milne  
Margaret Giles

Ronnie Nilant  
Oliver Mailes  
Helen Robertson  
Joanne Ellison  
Judith Male  
Elizabeth Wilmot  
James Black  
Gene Matthews

Jenny Walkden  
June Bryant  
Colin Gilbert  
Viv Wood  
Kathryn Carr  
Helen Hyde  
Janet Williams  
David Burn

Helga Seefeld  
Anne Hesford  
Sarah Innes  
Paul Maron  
Joan Saleeba  
Max Rowan-Robinson  
Christine Nowotny

### CLUB MEMBERS WE WILL REMEMBER

Divaker Sharma  
Dorothy Oates

Diana Chase  
Joan Rutter

Jonathan Perry

Milton Royal

# MEMBERS NEW AND OLD WHO'S WHO AT WABC

## Meet old club members:

GUESS WHO? 

### Did you guess??

The cute little boy in the May Trumps Plus was none other than President Des Cain



## Meet new club members



### Barbara Cotton

Growing up in Wickepin and Boddington, playing cards was a way of life with us. The progression from Euchre to Five Hundred to Bridge was natural. Like a lot of life's experiences it was much harder than expected but worth the challenge.

A few years ago, my sister Barbara decided a long term goal would be to learn bridge. Her spare time was limited so she asked my help and when her husband was transferred to Brisbane for two years it was the ideal opportunity. She had lessons there learning Standard American. Back in Perth Peter Smith taught her Acol and she was thrown into the deep end playing once a week when possible with me.

Barbara has a very good card sense and adapted quickly to our Wednesday evening sessions which we enjoyed immensely. Because there was talk of the club moving she waited to join. For five years, to the surprise of many fellow players, we didn't play in club competitions when they came up on Wednesday night. 'Barbara's not a member', we explained.

All that changed when the Club moved in January this year. The new rooms were closer to home and Barbara decided it was time to join the WABC. We won the first two sessions we played after this and master points are at last starting to accumulate. What's more as a keen golfer she puts her bridge skills to good use on Tuesday afternoons after the 18<sup>th</sup> hole!

**Pattie McNamara**

## MEMBERS NEW AND OLD WHO'S WHO AT WABC

### MEET MARGARET MACARTNEY

Talking to Margaret Macartney about bridge is rather like taking a journey through the history of bridge in WA and meeting up with some outstanding bridge personalities.

Margaret started playing auction bridge as an eight year old with her mother and sister. She remembers her father would be furious if they played on a Sunday as he considered that day to be the Sabbath.

In the 1950's she became really interested in learning contract bridge and had lessons with the Bromilows, a husband and wife, who were well-known at that time for teaching bridge. Later she met the Rosendorffs and had lessons with Hans who asked her to fill in to make up a table at his lessons. They also played an occasional game of rubber bridge. Some time later she formed a partnership with Jean Rosendorff when they played at Nigel's bridge school in the Broadway Shopping Centre.

When she started playing bridge at WABC which was then situated in a private house in Kings Park Road, West Perth, Margaret formed a partnership with Pam Clarkson whom she had met through playing golf at Karrinyup. This partnership developed into a great friendship and Margaret spent many happy holidays fishing and crabbing with Pam and Sam Clarkson down at Busseton. Margaret and Pam made it into the state team one year for the Canberra Congress.

Margaret and Pam were very lucky to play regular social games with Min Freedman who really taught them a lot. Eventually Margaret and Min formed another very happy and successful partnership at WABC. Other mentors were Mabs McCulloch and Vera Vahala. Margaret also enjoyed playing with Ailsa Smith for many years.

Before WABC had a licensed bar, Margaret was part of a small group, including Barbara Lindsay Taylor, Min Freedman and



Dolly Masel, who gathered after the Saturday game for drinks and nibbles and much hilarity, at one another's homes, including Dorothy Krantz's lovely house overlooking Matilda Bay.

Barbara Lindsay Taylor was another great friend and partner. They shared wonderful bridge holidays with Joan Carter and Joan Oldham at Eagle Bay staying at Elizabeth Black's beautiful holiday house. Now Margaret happily plays on a regular basis with Derek Pocock, who is a demanding and stimulating player. She also continues her enjoyable partnership with her good friend, Joan Carter.

Margaret has some nostalgia for the coziness of the old club rooms at Waratah Avenue, but feels the new purpose-built club at Swanbourne is more open and provides, overall, a very welcoming atmosphere.

Bridge has been a very important and fulfilling part of Margaret's life, because, in her own words, she is a 'reasonably good player' and has made wonderful friends.

**Jenny Davy**

# FROM THE ARCHIVES

## LOOKING AT THE HISTORY OF WABC

### VALLI KATZ

#### LIFE MEMBER WABC



Valli Katz was born in Vienna in 1907, her husband Joseph in 1911. When Hitler marched into Austria in 1938 she and Joe were forced to flee, fortunately receiving sponsorship here in Western Australia.

They arrived late in August accompanied by both sets of parents, her brother - the well known artist Louis Kahan - and an aunt. With them also came some family furniture including a much-prized grand piano, important because classical music was a vital part of their lives. (Son John recalls how Joe would follow scores in front of him as he listened.

Joe had good English skills, having studied at universities in both Germany and England, and was soon employed with Boans Limited. Valli had worked with her father as a tailor in Vienna. She had a keen eye for design along with fine sewing expertise and soon had a thriving business operating in William Street, Perth. Joe meanwhile began developing Katz and Company involving various agencies. He passed away suddenly in 1968 before we had the chance to meet him. A keen bridge player himself he made a significant contribution to the game in Western Australia.

Valli was a strong-minded woman and worked tirelessly for causes dear to her heart. She had many interests including classical music, enjoying concerts, the theatre, opera and art. She was on the council of W.A.B.C. for many years as either House or Building chairperson. At one stage she was in charge of buying trophies. Come the January sales, she would head off the Olsons in the city to buy all those needed for the coming year. I loved going with her on

these outings. The look on treasurer George Wright's face when we presented the bill; the difficulty come December matching purchases with Club event winners; these were fond memories of outings with Valli.

It was a treat to be invited to sample Valli's great cooking. She loved entertaining, regularly hosting drinks and bridge parties in her own home. You could always enjoy a good spread when she was in charge of catering for special Club events.

Brother, Louis Kahan, was very dear to her. On his visits to Perth from his home in Melbourne, she arranged for him to show his work and undertake portrait commissions. Her own private art collection was quite significant. She loved to travel too, returning to Europe on several occasions - especially to Salzburg where, as a youngster, she had enjoyed skiing. In her latter years she was content to spend time with her family and to invite friends home for bridge and a slice of her delicious Viennese cakes.

Valli passed away in 2000. Her personal values touched and influenced many people over many decades. We in the bridge world were fortunate to be part of her life.

Thank you Valli.

**Helen George**

# FROM THE ARCHIVES

## LOOKING AT THE HISTORY OF WABC

*The WABC has been served remarkably well over the years by capable Presidents. They have given a great deal of time and creative effort to enable our club to run smoothly and to be the outstanding success that it is today. Trumps Plus acknowledge their contribution by introducing them to you - from past to present. We begin at the beginning with Dr J. Bentley.*



**Dr James Bentley**  
M.B., Ch.B.(Edin.)

Dr James Bentley graduated from the faculty of medicine at Edinburgh University in 1904, and in August of that year was appointed house surgeon in a Lancashire hospital. He had many interesting appointments, among them medical officer on the Royal mail steamer, "Oronsa" (perhaps an early bridge cruise?), before being offered an appointment by the Government of Western Australia under Dr. Montgomery at the Claremont Mental Hospital in 1908 and later becoming Superintendent there.. His official biography lists his interest in the 'manly game of football' but there is not doubt that in his later years he became a passionate advocate of the new game, contract bridge. In 1939 the three bridge clubs operating in Perth through the 1930s amalgamated to form the West Australian Bridge Association. Dr Bentley became its first president.

### CLUB PRESIDENTS

<b>Dr J. Bentley</b>	<b>1939</b>
<b>Mr C King</b>	<b>1939-1957</b>
<b>Mrs W Berry</b>	
<b>Dr J. Love</b>	<b>1958</b>
<b>H. G. Rosendorff</b>	<b>1960-1964</b>
<b>Dr. E. Edwards</b>	<b>1963</b>
<b>Brig. F. Hussey</b>	<b>1965</b>
<b>Mr Justice Virtue</b>	<b>1968</b>
<b>Dr E. Haywood</b>	<b>1969</b>
<b>Mr N. Mews</b>	<b>1971</b>
<b>Mr M. Hopper</b>	<b>1973</b>
<b>Brig. F. Hussey</b>	<b>1974</b>
<b>Mr G. Ruse</b>	<b>1975</b>
<b>Sir John Virtue</b>	<b>1977</b>
<b>Mr J. Ashworth</b>	<b>1980</b>
<b>Dr C. Chin</b>	<b>1982</b>
<b>Mrs M. McCulloch</b>	<b>1983</b>
<b>Mrs S. Vincent</b>	<b>1986</b>
<b>Mrs A. Smith</b>	<b>1989</b>
<b>Mrs BLindsay-Taylor</b>	<b>1991</b>
<b>Mrs C. Pocock</b>	<b>1994</b>
<b>Mrs T. Manford</b>	<b>1997</b>
<b>Mrs A. Ohlsen</b>	<b>1999</b>
<b>Mrs L. Wild</b>	<b>2000</b>
<b>Mrs H. Kemp</b>	<b>2003</b>
<b>Mr D. Cain OAM</b>	<b>2006</b>

# SOLUTIONS TO PROBLEMS

## SOLUTIONS TO QUIZZES ON PAGES 6-7

1. Open 1♣. You'll be untroubled by a 1♦ or 1♥ response as you can rebid 1♠, and of course if partner responds 1♠ you will support to 2♠. Finally a 1NT response could be passed (or convert it to 2♣ if you'd prefer).

2. Open 1NT if playing Acol, just as a practical measure. OK, you don't normally have two doubletons but if they're strong there's usually no harm. You may land on your feet with a 1♦ opening but it will be tricky if partner responds 1♠ because a 2♥ rebid is out and those diamonds aren't so flash for a rebid.

3. Open 1♦. The obvious difficulty comes with a 1♠ response, where you should plan on a 2♣ rebid. This ostensibly shows 5-4 shape but the dreaded 4441 distribution poses an exception. OK, you're fibbing about your shape but fibbing about the minors doesn't usually lead to much harm as you'll often play in no trumps if going to game. However it would be criminal to open 1♥ (the old "suit below the singleton" through thick and thin advice) since when you rebid a minor partner may get excited about hearts, now playing you for 5. Also, whatever you do don't open 1♣ with this shape because a 1♠ response will force you into a reversing situation!

4. Open 1♦ and treat it like the previous one – as if 4441. The problem with a 1♣ opening is that after a 1♠ response you can't rebid 2♦ (a reverse) so you would have to rebid 2♣. With such a poor suit that would tend to mis-state your playing potential and the nature of your hand. Whichever way you go you'll be misleading your partner to some extent so choose the option that's more comfortable.

5. Open 1♥. Yes, we normally open our longest suit, but a weak 5-6 shape is an exception. After all if we open 1♦ we don't have the strength for a 2♥ reverse over say a 1♠ response and it's too easy for the all-important major to get lost. Therefore just treat this as a 5-5 shape and open 1♥ and rebid 2♦.

6. Open 1♦ (or 1♥ if that's your style), but the rebid's the thing – 1NT over a 1♠ response (or 2NT over 2♣). Don't open 1♦ and rebid 2♥ thinking you must reverse. A reverse shows 5-4 shape, not 4-4 and a balanced hand. This is simply a classic NT rebid in Acol - except if partner responds 1♥, in which case support hearts.

7. Open 1NT – just being practical. A 1NT opening may contain a feeble five card major – pretend it's just four. The alternative, to open 1♥, is superficially OK, but over a 1♠ response you have no other rebid except 2♥. That looks misdirected so 1NT in the first place is better.

8. Open 1NT, again just practical stuff. Treat the clubs as if a five card suit, when it's routine to open 1NT and not 1♣.

## SOLUTION TO PLAY PROBLEM ON PAGE 8

Tim Seres of the Australian team, which must be highly delighted to have finished sixth in the round-robin, showed why he is team captain in this deal against the round robin winners, Britain.

♠97543	
♥K1073	
♦85	
♣73	
♠AQ8	♠KJ106
♥964	♥5
♦A92	♦KQJ6
♣J862	♣10964
♠2	
♥AQJ82	
♦10743	
♣AKQ	

Flint got off to the only lead that gives declarer any difficulty, a small trump. If the hearts break the hand is a cooler, but if they don't.....

The obvious line is to win the heart in hand, cash the three high clubs, discarding a diamond, concede a diamond, win the marked heart continuation in hand, ruff a diamond — and then declarer cannot get off dummy without telegraphing his entire hand: he'll eventually lose three diamonds and a spade.

Seres clearly owns no stock in Western Union. He went up with the heart king on the opening lead, then came off dummy with a small spade to Flint's eight. On the heart return, East (Terence Reese) threw a small club. Seres **now led a small diamond from hand** and Reese overtook partner's nine to push a club through. That was the end of the defence. Seres now cashed the high clubs, pitching dummy's diamond and cross-ruffed for ten tricks.

The key point is that acute strength or weakness in the closed hand is often difficult for the enemy to visualise. Particularly where the bidding made no comment on such, the concealment must be maintained for as long as possible in the play. Here from East's viewpoint the whole hand might pivot around the defence taking the club finesse. Hence he seized the lead to scuttle South's clubs. *Conceal vivid strengths and weaknesses.*



# DIARY DATES

EVENING PAIRS CHAMPIONSHIP	Wednesday, 13 August 2008 19:30
OPEN RED POINT TUESDAY	Tuesday, 26 August 2008 13:00
YOUTH FUNDRAISER BRIDGE	Saturday, 30 August 2008 13:30
OPEN RED POINT THURSDAY	Thursday, 11 September 2008 13:00
DAYTIME PAIRS CHAMPIONSHIP	Friday, 12 September 2008 13:00
AGM OPEN RED POINT PAIRS	Tuesday, 7 October 2008 13:00
OPEN RED POINT SATURDAY	Saturday, 11 October 2008 13:30
MELBOURNE CUP LUNCH	Tuesday, 4 November 2008 11:00
CHRISTMAS CONGRESS	
FRIDAY PAIRS	Friday, 5 December 2008 13:00
SATURDAY PAIRS	Saturday, 6 December 2008 13:30
SUNDAY TEAMS	Sunday, 7 December 2008 10:00
PRESIDENT'S PAIRS	Sunday, 7 December 2008 13:30
CHRISTMAS BRIDGE PRIZE GIVING	Tuesday, 16 December 2008 13:00

## PETER SMITH'S INTRODUCTION TO TEAM BRIDGE

DATE: SUNDAY 10TH  
AUGUST  
TIME: 1.00 TO 5.00 PM

*Ever wanted to play in a team event but haven't  
been sure what is involved?*

Former Australian representative, Peter Smith, will be holding a one afternoon introduction comprising a short lecture, a match of 20 boards and analysis of hands after the match.

Notes will be provided.

This is an excellent opportunity for those players who have either already entered the BAWA Masters in Teams of 3, or would like to.

Great grounding for playing for your club in the inter-club teams, club team championships, league teams, GNOT and BAWA team events.

**FREE TO ALL WABC MEMBERS.  
A NOMINAL CHARGE OF \$5 FOR  
MEMBERS OF OTHER CLUBS.**

**ENTRIES IN TOURNAMENT BOOK  
OR VIA WABC WEBSITE  
[www.wabridgeclub.com.au](http://www.wabridgeclub.com.au)**

**WABC  
7 Odern Crescent  
SWANBOURNE  
PHONE: 9284 4144**

# WABC SESSION TIMES

TABLE MONEY \$5.00 Members \$7.00 visitors \$3.00 Youth players

## SUPERVISED – BEGINNERS

DAYTIME: Monday (P) 12.30 – 3.15 Except Public Holidays.  
EVENING: Wednesday (P) 7.30 – 10.30 Ideal for any novice player.

- *These sessions are supervised – you may ask for help during play.*

*(P) You don't need to bring a partner.*

## INTERMEDIATE

DAYTIME: Wednesday 11.30 – 3.00  
*Advice given, but only after the game, not during the session.*

## OTHER SESSIONS

DAYTIME: Monday 11.30 – 3.00 Graduate to this from Supervised.  
Tuesday 1.00 – 4.30 The premier session.  
Thursday 1.00 – 4.30 Popular with newer players.  
Friday 1.00 – 4.30 Our most popular session.  
Saturday (P) 1.30 – 4.45 Relaxed and social.

EVENING: Wednesday (P) 7.30 – 11.00 Very popular & a good atmosphere.

- *Sessions marked (P) indicate you may attend without a partner.*
- *If you need a partner for any other session phone Val Fleay (9272 1388)*

[www.wabridgeclub.com.au](http://www.wabridgeclub.com.au)

**!! MEMBERS REMINDER !!**  
**USUAL SATURDAY SESSION CANCELLED 23rd AUGUST**  
*Due to the Swan River Swiss Pairs being held at WABC*

